

THE
UNIVERSITY
OF RHODE ISLAND
OUTREACH CENTER

4 TO 39: EPA'S CLIMATE SHOWCASE COMMUNITIES & RI PUBLIC ENERGY PARTNERSHIP

Kristina DiSanto, M.S.
URI Outreach Center

National Extension Energy Summit
Thursday, April 9, 2015

THINK BIG  WE DO™



KEY POINTS

Our story's relevance vis a vis community engagement

- Proves there's value in “thinking big but starting small”
- Demonstrates that ongoing modification to existing efforts leads to increased impacts
- Highlights crucial nature of an interdisciplinary (i.e. economic, marketing, engineering, policy) approach
- The job is never done!

EPA COMMUNITY ENERGY CHALLENGE

- **Reduce GHG emissions by at least 10%**
- **Improve environmental, economic, health, and social conditions at the local level**
- **Promote sustainable energy management programs**

In Rhode Island, (4) communities signed on to the EPA Community Energy Challenge on their own in 2008:

*Warwick
East Greenwich
North Providence
South Kingstown*

EPA Climate Showcase Communities (CSC)

Create replicable models of cost-effective and persistent greenhouse gas reductions that will catalyze broader local government actions to stabilize the climate and improve environmental, economic, health, and social conditions.



EPA Climate Showcase Communities

Community Partners & Project Team



*City of
Warwick*



*Town of East
Greenwich*



*Town of South
Kingstown*



*Town of North
Providence*



nationalgrid

HERE WITH YOU. HERE FOR YOU.



R I S E
ENGINEERING



THE
UNIVERSITY
OF RHODE ISLAND
OUTREACH CENTER

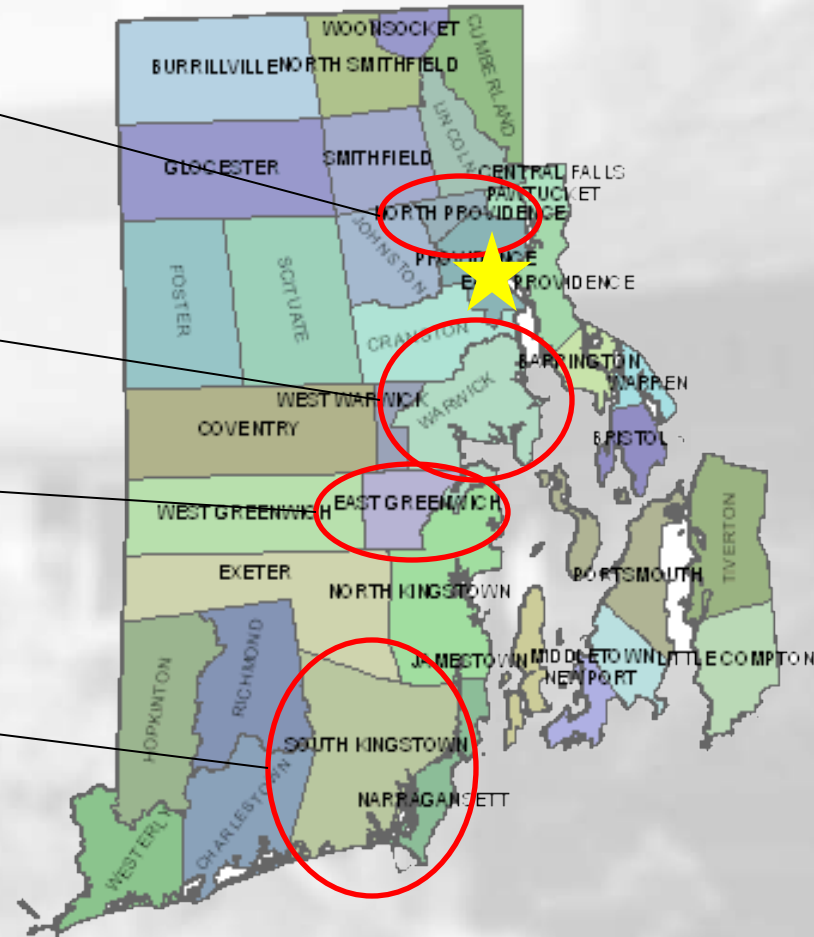
THINK BIG  WE DO™



EPA Climate Showcase Communities

Community Partners

- **North Providence**
Area: ~6 square miles
Pop.: ~33,000
- **Warwick**
Area: ~50 square miles
Pop.: ~85,000
- **East Greenwich**
Area: ~17 square miles
Pop.: ~15,000
- **South Kingstown**
Area: 80 square miles
Pop.: 32,000



EPA CSC GOALS

- Implement at least one large-scale efficiency project in each municipality
- Implement training and outreach programs

Targeted Sector	Energy Reduction Goal	GHG Reduction Goal
Municipal		1,435 MtCO ₂ e
Residential		1,645 MtCO ₂ e
Total	1,913mWh electricity	3,080 MtCO₂e

MUNICIPAL ENERGY PERFORMANCE DELIVERABLES

- Data benchmarking in Portfolio Manager
- Energy data reports
- Energy Management Guides
- Municipal energy policies
- Whole Building Assessments
- Showcase projects
- Steering Committee



EDUCATION & OUTREACH DELIVERABLES

- **Municipal sector:**
 - See the Light Energy Toolkit
 - Energy Management Training
 - Building Operator Certification
- **Residential sector:**
 - Municipal Energy Webpages
 - National Grid Community Initiative
 - Master Energy Training Program
 - Residential Energy Workshops



RESULTS: REDUCTIONS ACHIEVED

Targeted Sector	Energy Reduction Goal	GHG Reduction Goal (MtCO ₂ e)	Energy Reductions Achieved	GHG Reductions Achieved (MtCO ₂ e)
Municipal		1,435	2,802 mWh electricity 36,058 gallons oil	2,301
Residential		1,645	8,686 mWh electricity	6,410
Total	1,913mWh electricity	3,080	11,488 mWh electricity	8,651
Total + Projections			11,676 mWh electricity	8,780

CUMULATIVE RESULTS

- *6 years of monthly energy data* logged into EPA's Portfolio Manager Tool
- Published *Energy Management Guides*
- Formal adoption of *Energy Conservation Policies*
- Implementation of *showcase projects*
- Leveraging of funds to complete additional projects
- *15 Steering Committee Meetings* held to share lessons learned, challenges, and achievements

CUMULATIVE RESULTS

- Implementation of energy conservation *behavior change campaign*
- *Training of over 400 residents*, business owners, and municipal officials in energy concepts
- Encouragement of residents to *recycle over 6,000 refrigerators*, receive *7,000 home energy audits*, and implement over *2,000 weatherization projects*
- *20 students trained* through the URI Energy Fellows Program by implementing program deliverables
- Development of the *RI Public Energy Partnership*

“This really opened our eyes to all that could be done, and we are looking at what we can do with our other city buildings. The grant is not ending. It *created a foundation* so that we can move forward and continue to have energy-efficient initiatives, and I hope that this partnership continues in the future.”

-Stephen Alfred, Town Manager
of South Kingstown, RI

ADAPTING TO CHALLENGES

Challenges:

- **Managing data**
- **Maintaining partnerships and competing priorities**
- **Maintaining residential engagement**

Opportunities:

- **Improved collaboration with National Grid**
- **Municipal showcasing and streamlined processes**
- **Needs assessment and program evaluation**

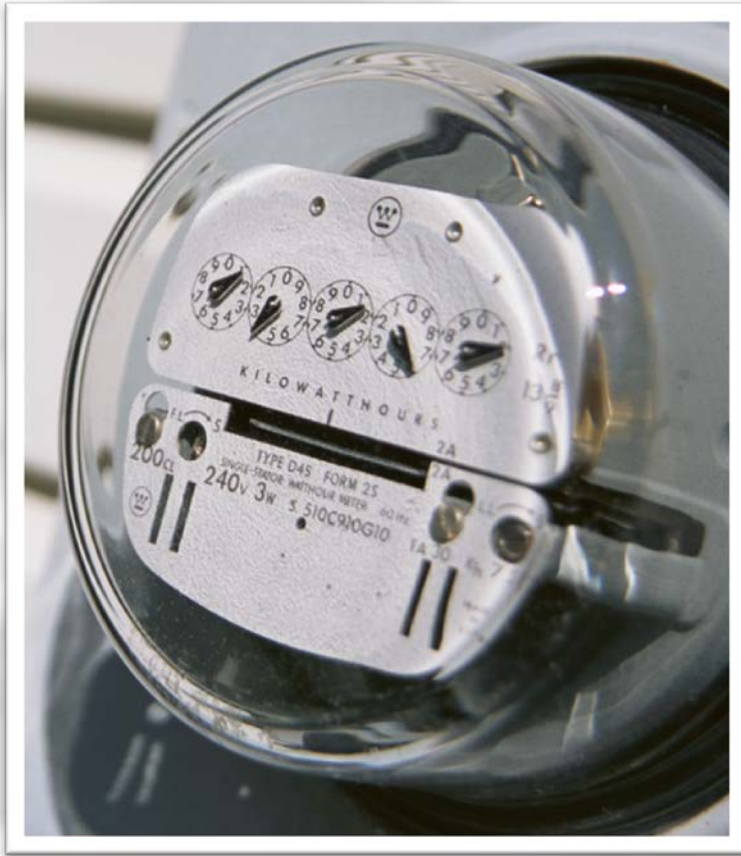
RI PUBLIC ENERGY PARTNERSHIP

A *collaboration* among...

- RI Office of Energy Resources
- National Grid
- URI Outreach Center
- Narragansett Bay Commission
- Energy Efficiency and Resource Management Council
- Key state and municipal agencies

...to achieve *deep energy savings* in state
and municipal facilities

GOALS OF RIPEP



- *Data:* Create an inventory of energy consumption in municipal and state facilities
- *Projects:* Help approximately 100 public facilities achieve 20% energy savings
- *Barriers:* Identify and mitigate barriers to efficiency improvements

PROGRESS TO DATE

Municipal Partners

School District Partners

*25 of 39 municipalities
26 of 36 school districts
15 of 28 state agencies
12 water suppliers*

ADDITIONAL ACCOMPLISHMENTS

Data:

- Scored 35 sites in DOE's Asset Scoring Tool
- Trained 8 customers to commit to data tracking
- Better Buildings Challenge participant

Projects:

- Implemented 70 projects with savings greater than 20%

Barriers:

- Defined barriers and brainstormed solutions related to capital and procurement, motivation, and technical assistance

MOVING FORWARD

- Continued municipal and residential customer engagement
- Continued collaboration with National Grid
- Action team development to implement solutions to defined barriers
- Policy design
- Adapting methods to different sectors

CONTACT INFORMATION

Kristina DiSanto, Coordinator
Energy Projects and Fellowship Programs

kdisanto@uri.edu

(401)874-4524

URI Outreach Center

<http://web.uri.edu/ceoc/>

(401)874-2900